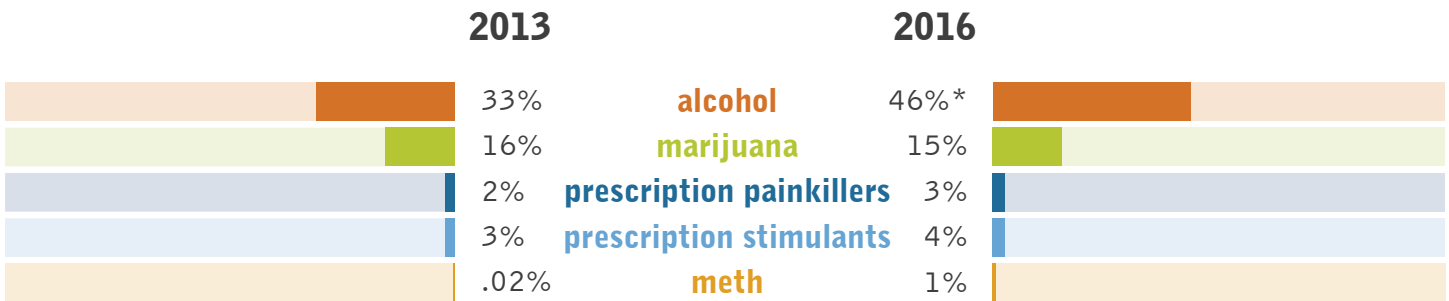


# Rise Above Colorado Youth Survey

The Rise Above Colorado Youth Survey is a data source for behavioral health and substance use attitudes and behaviors among Colorado teens 12-17. The 2016 data of more than 600 youth is based on a representative sample of the entire state. For more information and complete survey data, visit [www.riseaboveco.org](http://www.riseaboveco.org).

## Substance use, 2013 & 2016

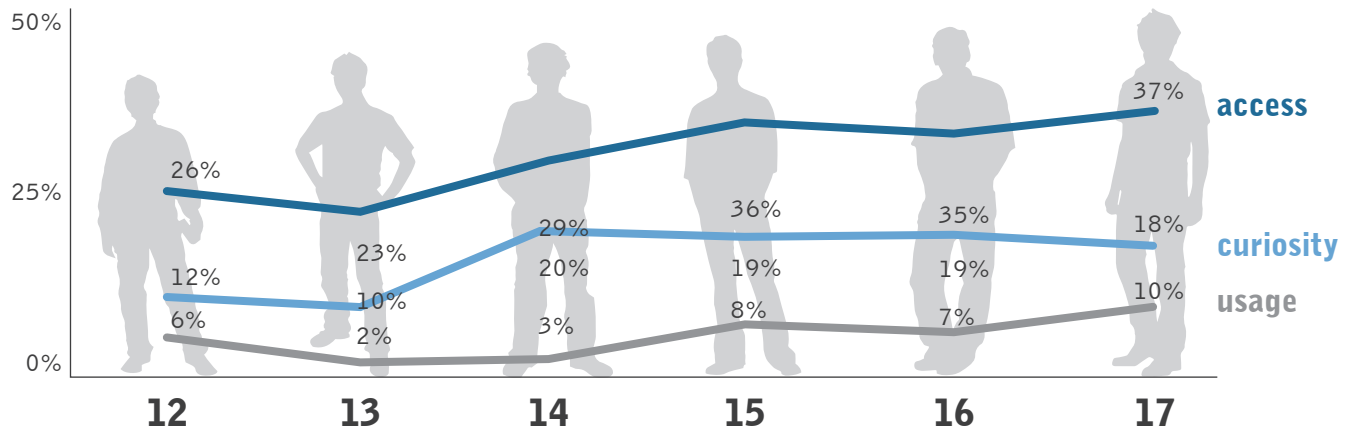
Although concerns exist, the vast majority of teens are making healthy choices about substances



\*statistically significant difference from 2013

## 2016 access, curiosity and use of one or more drugs (marijuana, meth and prescription stimulants and painkillers) by age

Prevention education — begin early and continuously support

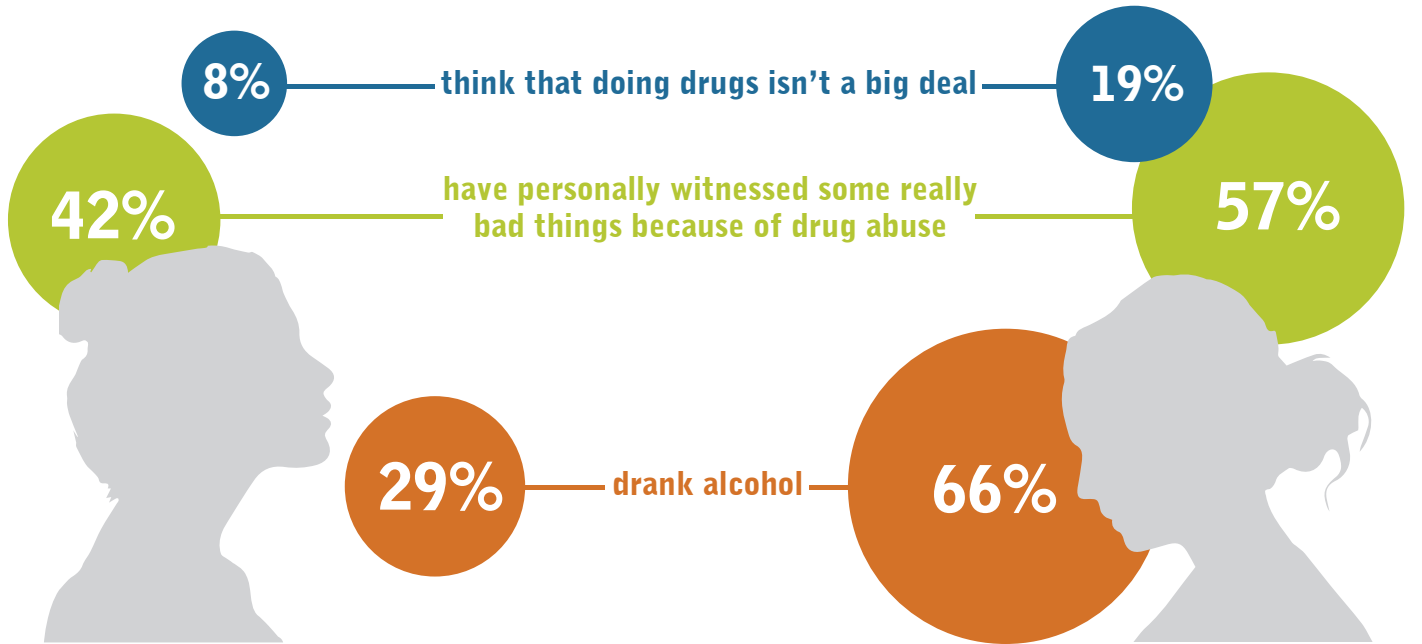


## Connections to mental health

The impact of social-emotional challenges are real

No difficult days per month

6 or more difficult days per month



## Risk & protective factors

Teens who agree or disagree with these statements show statistically significant differences in use of one or more drugs (marijuana, meth and prescription stimulants and painkillers)

